

# ACCOMPLISHMENT REPORT

CLFP | 2022



## IN THIS ISSUE

**2** 2022 Board of Directors  
**3** Going Global  
**4** 2022 Membership  
**8** Cindy Spurdle Award of Excellence & CLFP Day  
**10** ALFP 2022 Recap

**12** 2023 Board of Directors  
**14** Companies with 3 or More CLFPs  
**16** New CLFPs and Associates  
**20** Thank You to Our 2022 Corporate and Personal Partners!



## 2022 BOARD OF DIRECTORS

**Nathan Gibbons, CLFP**

Past President | *Innovation Finance*

**Jenny Wood, CLFP**

President | *Orion First Financial*

**Lia Wax, CLFP**

Vice President | *Financial Pacific Leasing*

**Todd Buzard, CPA, CLFP**

Treasurer | *First American Equipment Finance*

**Mike McDonald, CLFP**

Vice Treasurer | *Stryker*

**Candace Reinhart, CLFP**

Secretary | *CoreTech Leasing*

**Craig Colling, CLFP**

*Ascentium Capital*

**Mikki Henkelman, CLFP**

*Oakmont Capital Holdings*

**Theresa Kabot, CLFP**

*Kabot Commercial Leasing*

**Paul Knowlton, CLFP**

*Huntington Equipment Finance*

**Larry LaChance, CLFP**

*Bankers Capital*

**Jena Morgan, CLFP**

**Michael "Mic" Mount, CLFP**

*U.S. Bank Equipment Finance*

**Daniel Nelson, CLFP**

*Tamarack Technology*

**Kathy Nordendahl, CLFP**

*Dedicated Funding*

**Deborah Reuben, CLFP**

*TomorrowZone*

STAFF

**Reid Raykovich, CLFP**

CEO

**Mel Vinson, CLFP**

VP of Marketing and Development

**Sandy Vigilia**

Executive Administrator

## THANK YOU TO OUR SUPPORTING ASSOCIATIONS





# GOING GLOBAL

With COVID travel restrictions lifted, CEO Reid Raykovich, CLFP was at last able to attend international industry events in Canada and Australia to spread the word of the CLFP designation.

The first conference was in Charlottetown, PEI, in September and held by the Canadian Finance & Leasing Association (CFLA) where Raykovich announced the kickoff of the designation to conference attendees.

She is pictured (right) with industry association leaders (from L-R): Ralph Petta, President and CEO of the Equipment Leasing and Finance Association (ELFA), Michael Rothe, President and CEO of CFLA, David Gandolfo, Chair of Advocacy for the Commercial Asset and Finance Broker Association (CAFBA), and David Gill, CLFP, CEO of CAFBA.

In November, she traveled to Melbourne, Australia to attend the CAFBA Annual Conference held at the Grand Hyatt. There, she sat on a panel with Terry Moody (L), and Gerard Hermens (R) who along with several other CAFBA members and staff, have been working hard to officially announce the completion of the Australian CLFP designation (bottom right).



## 2022 MEMBERSHIP

The Foundation had another record year and membership grew from 1,093 to 1,240 (as of December 6, 2022). That's a 13.5% increase, compared to 12% in 2021. Below are those that joined the community in 2022:

Chase Aiken, CLFP	<i>PNC Equipment Finance</i>	Jodi Brockman, CLFP	<i>Channel</i>
José Albertorio Matos, CLFP	<i>Commercial Equipment Finance, Inc.</i>	Nicholas Bromberek, CLFP	<i>Crossroads Equipment Lease &amp; Finance LLC</i>
Blake Anderson, CLFP	<i>Amur Equipment Finance</i>	Kristopher Brown, CLFP	<i>Key Equipment Finance</i>
Bryan Anderson, CLFP	<i>Northland Capital Financial Services, LLC</i>	Jordan Brown, CLFP	<i>Key Equipment Finance</i>
Eric Angleró, CLFP	<i>Commercial Equipment Finance, Inc.</i>	Sam Bugas, CLFP	<i>DLL Associate</i>
Michael Arida, CLFP	<i>Beacon Funding Corporation</i>	Jacquelyne Burdette, CLFP	<i>AP Equipment Financing</i>
James Backoff, CLFP	<i>Stryker</i>	Zachary Burghardt, CLFP	<i>Amur Equipment Finance</i>
Katherine Baker, CLFP	<i>MC2 Finance</i>	William Burns III, CLFP	<i>First American Equipment Finance, a City National Bank Company</i>
Cheryl Baker, CLFP	<i>Unknown</i>	John Burrell, CLFP	<i>Arvest Equipment Finance</i>
Nicholas Balzer, CLFP	<i>Vision Financial Group, Inc.</i>	Katherine Butzow, CLFP	<i>Stryker</i>
Roger Beil, CLFP	<i>Arvest Equipment Finance</i>	Megan Bystol-Olvera, CLFP	<i>John Deere Financial</i>
John Bender, CLFP	<i>First American Equipment Finance, a City National Bank Company</i>	Zuzanna Capozzi, CLFP	<i>North Mill Equipment Finance Associate</i>
Janine Benson, CLFP	<i>Key Equipment Finance</i>	Anita Carew, CLFP	<i>FIS</i>
Karla Beran, CLFP	<i>Amur Equipment Finance</i>	Marc Cimon, CLFP	<i>First American Equipment Finance, a City National Bank Company Associate</i>
Alec Bercher, CLFP	<i>Navitas Credit Corp.</i>	Michael Clark, CLFP	<i>Stryker</i>
Nuria Blais Sotiropoulos, CLFP Associate	<i>American Lease Insurance</i>	Michael Cohen, CLFP	<i>Crossroads Equipment Lease &amp; Finance LLC</i>
Jean Blakeley-Cook, CLFP	<i>Channel</i>	Erika Colbath, CLFP	<i>Ascentium Capital LLC</i>
Emily Blinzler, CLFP	<i>Arvest Equipment Finance</i>	Justin Collum, CLFP	<i>Wallwork Financial Corp Associate</i>
Danielle Bonzer, CLFP	<i>Northland Capital Financial Services, LLC</i>	Mark Conrad, CLFP	<i>Stryker</i>
Christopher Bough, CLFP	<i>Amur Equipment Finance</i>	Daniel Constants, CLFP	<i>North Mill Equipment Finance Associate</i>
Brian Bourne, CLFP	<i>KLC Financial, Inc.</i>	Richard Cook, CLFP	<i>The Huntington National Bank</i>
Kyle Boysen, CLFP	<i>Amur Equipment Finance</i>	Kristin Coster, CLFP	<i>North Mill Equipment Finance</i>
Stephanie Bramer, CLFP	<i>The Huntington National Bank</i>	Sheila Coyle, CLFP	<i>ECS Financial Services, Inc.</i>
Teuni Breg, CLFP	<i>DLL</i>		
Kimberly Brennan, CLFP	<i>AP Equipment Financing</i>		
Stacey Brewster, CLFP	<i>CIT a division of First Citizens Bank</i>		

Timothy Creasy, CLFP	<i>Crossroads Equipment Lease &amp; Finance LLC</i>	Carol Gabbert, CLFP	<i>First American Equipment Finance, a City National Bank Company</i>
Amy Cunningham, CLFP	<i>DLL</i>	Associate	
Taylor Dannar, CLFP	<i>Alliance Funding Group</i>	Ericka Garcia, CLFP	<i>Ascentium Capital LLC</i>
Michael Davis, CLFP	<i>Arvest Equipment Finance</i>	Wilmely Garcia Ramos, CLFP	<i>Commercial Equipment Finance, Inc.</i>
Scott Dawson, CLFP	<i>Northland Capital Financial Services, LLC</i>	Kathryn Georgiana, CLFP	<i>DLL</i>
Stephanie DeBoer, CLFP	<i>DLL</i>	Noah Gerlach, CLFP	<i>First American Equipment Finance, a City National Bank Company</i>
Michele DeBoer, CLFP	<i>Tokyo Century (USA) Inc.</i>	David Gernhard, CLFP	<i>Transport Enterprise Leasing LLC</i>
Whitley Delaney, CLFP	<i>Navitas Credit Corp.</i>	Jared Goldberg, CLFP	<i>Kalamata Capital Group (KCG)</i>
Nicholas Demers, CLFP	<i>First Citizens Bank</i>	Michael Gregan, CLFP	<i>DLL</i>
Rachel Dhaenens, CLFP	<i>Stryker</i>	Anne Grider, CLFP	<i>Transport Enterprise Leasing LLC</i>
Joshua Dickens, CLFP	<i>Arvest Equipment Finance</i>	Richard Griffin Jr., CLFP	<i>The Huntington National Bank</i>
Logan Dickey, CLFP	<i>Amur Equipment Finance</i>	Mitchell Hartmann, CLFP	<i>CIT a division of First Citizens Bank</i>
Tonya DiGregorio, CLFP	<i>Winfield Corp. dba Harry Fry &amp; Assoc.</i>	Austen Hassebrock, CLFP	<i>DLL</i>
Wendlyn Dixon, CLFP	<i>AP Equipment Financing</i>	Justin Hayes, CLFP	<i>DLL</i>
Kristy Doll, CLFP	<i>Oakmont Capital Holdings, LLC</i>	Zachary Heyd, CLFP	<i>Beacon Funding Corporation</i>
Alexandra Dressman, CLFP	<i>The Huntington National Bank</i>	Mark Hoffmann, CLFP	<i>Key Equipment Finance</i>
Steven Easler, CLFP	<i>CIT a division of First Citizens Bank</i>	Jodi Hoskins, CLFP	<i>ECS Financial Services, Inc.</i>
Bradley Edwards, CLFP	<i>Arvest Equipment Finance</i>	Ryan Hunt, CLFP	<i>DLL</i>
Jessica Eisenbeis, CLFP	<i>North Mill Equipment Finance</i>	Tomomi Ichinose, CLFP	<i>Tokyo Century (USA) Inc.</i>
Jack Elenbaas, CLFP	<i>Crossroads Equipment Lease &amp; Finance LLC</i>	Elizabeth Johns, CLFP	<i>DLL</i>
Heather Ellison, CLFP	<i>First Citizens Bank</i>	Maganlall Jugurnauth, CLFP	<i>Infinite Capital Group</i>
Brian Eschmann, CLFP	<i>Northland Capital Financial Services, LLC</i>	Hiroki Kawai, CLFP	<i>Sumitomo Mitsui Finance and Leasing Co., Ltd.</i>
Jackie Ettle, CLFP	<i>Northland Capital Financial Services, LLC</i>	Lori Kline, CLFP	<i>Canon Financial Services, Inc.</i>
Tanner Evans, CLFP	<i>Key Equipment Finance</i>	Samantha Knight, CLFP	<i>North Mill Equipment Finance</i>
Sylvianne Evans, CLFP	<i>U.S. Bank Equipment Finance</i>	Joseph Knobbe, CLFP	<i>Channel</i>
Cole Farmer, CLFP	<i>Blue Street Capital, LLC</i>	Emily Krause, CLFP	<i>First Citizens Bank</i>
Ryan Flores, CLFP	<i>U.S. Bank Equipment Finance</i>	Daniel Kvas, CLFP	<i>Falcon Equipment Finance, a division of Falcon National Bank</i>
Wade Fox, CLFP	<i>DLL</i>		
Christopher Frans, CLFP	<i>Epic Finance</i>		
Joel Freebersyser, CLFP	<i>MC2 Finance</i>		

Kevin Law, CLFP	<i>Key Equipment Finance</i>	Bradley Nicholson, CLFP	<i>The Huntington National Bank</i>
Desire' Leaf, CLFP	<i>Key Equipment Finance</i>	Zeb Ollendick, CLFP	<i>DLL</i>
Raysa Leguizamon, CLFP	<i>North Mill Equipment Finance Associate</i>	Rebecca Persin, CLFP	<i>First Citizens Bank</i>
Conner Lenahan, CLFP	<i>Quality Leasing Co., Inc.</i>	Trevor Petersen, CLFP	<i>North Mill Equipment Finance</i>
Patrick Lewis, CLFP	<i>Arvest Equipment Finance Associate</i>	Michael Peterson, CLFP	<i>Crossroads Equipment Lease &amp; Finance LLC</i>
Alexander Lindsey, CLFP	<i>CIT a division of First Citizens Bank</i>	Gregory Pfeffinger, CLFP	<i>DLL</i>
Christopher Little, CLFP	<i>The Huntington National Bank</i>	Janet Phillips, CLFP	<i>LEAF Commercial Capital Inc.</i>
David Lowe, CLFP	<i>Beacon Funding Corporation</i>	James Plummer, CLFP	<i>Quality Leasing Co., Inc.</i>
Jason Manthei, CLFP	<i>U.S. Bank Equipment Finance</i>	Ryan Porter, CLFP	<i>North Mill Equipment Finance</i>
Ruth Martens, CLFP	<i>U.S. Bank Equipment Finance</i>	Travis Rader, CLFP	<i>The Huntington National Bank</i>
Jennifer Martin, CLFP	<i>Key Equipment Finance</i>	Thomas Rahlfs, CLFP	<i>Beacon Funding Corporation</i>
Jennifer Martin, CLFP	<i>KLC Financial, Inc.</i>	Adam Ramirez, CLFP	<i>Tokyo Century (USA) Inc.</i>
Sydni Martines, CLFP	<i>LTi Technology Solutions</i>	Megan Reigstad, CLFP	<i>Financial Pacific Leasing, Inc., an Umpqua Bank Company</i>
Trudie McAdams, CLFP	<i>The Huntington National Bank</i>	Nicole Rice, CLFP	<i>Affiliated Financial Services</i>
Richard McAuliffe, CLFP	<i>Siemens</i>	Catherine Robinson, CLFP	<i>Navitas Credit Corp.</i>
Patrick McKeever, CLFP	<i>DLL</i>	Christopher Rooney, CLFP	<i>The Huntington National Bank</i>
Connor Means, CLFP	<i>MAZO Capital Solutions</i>	Rachel Rouillard, CLFP	<i>First Citizens Bank</i>
Mariana Melo Mejia, CLFP	<i>Commercial Equipment Finance, Inc.</i>	Alex Ruderman, CLFP	<i>Odessa</i>
Joshua Metcalf, CLFP	<i>Tokyo Century (USA) Inc.</i>	Melanie Rudiger, CLFP	<i>The Huntington National Bank</i>
Jessica Meyer, CLFP	<i>ECS Financial Services, Inc.</i>	Gregory Rupp, CLFP	<i>DLL</i>
Tracy Middleton Plank, CLFP	<i>DLL</i>	MollyAnn Sand, CLFP	<i>Oakmont Capital Holdings, LLC</i>
Hunter Miller, CLFP	<i>Stryker</i>	Katelyn Saxton, CLFP	<i>First American Equipment Finance, a City National Bank Company</i>
Joseph Mirch, CLFP	<i>Arvest Equipment Finance</i>	Jodie Schimek, CLFP	<i>Oakmont Capital Holdings, LLC</i>
Naya Montoya, CLFP	<i>Key Equipment Finance</i>	Jennifer Schreurs, CLFP	<i>U.S. Bank Equipment Finance</i>
Robert Moore, CLFP	<i>Santander Bank, N.A</i>	Steven Schroeder, CLFP	<i>JASJ, LLC</i>
Andrea Moreno, CLFP	<i>North Mill Equipment Finance</i>	Shelby Schut, CLFP	<i>Stryker</i>
Molly Morris, CLFP	<i>The Huntington National Bank</i>	Hailey Seltzer, CLFP	<i>Transport Enterprise Leasing LLC</i>
Crystal Murcha, CLFP	<i>Amur Equipment Finance</i>	Rema Shamon, CLFP	<i>The Huntington National Bank</i>
Benjamin Mussehl, CLFP	<i>Compeer Financial</i>		
Claire Nelson, CLFP	<i>Amur Equipment Finance</i>		

Zachary Shiffman, CLFP	<i>The Huntington National Bank</i>	Jerell Vincent, CLFP	<i>Delta Financial Group</i>
Darren Sholes, CLFP	<i>GreatAmerica Financial Services</i>	Sarah Walter, CLFP	<i>ECS Financial Services, Inc.</i>
Brittany Simonsen, CLFP	<i>Orion First Financial LLC</i>	Brandie Wawrzynski, CLFP	<i>Unknown</i>
Ricardo Small, CLFP	<i>Cadence Bank</i>	Jeffrey Wehe, CLFP	<i>Northland Capital Financial Services, LLC</i>
Kassidy Small, CLFP	<i>DLL</i>	Nicolette Wellington, CLFP	<i>The Huntington National Bank</i>
Dakota Smith, CLFP	<i>Bevel Financial LLC</i>	Benjamin Wendt, CLFP	<i>CIT a division of First Citizens Bank</i>
Brian Smith, CLFP	<i>Vectra Bank Colorado</i>	Nicole White, CLFP	<i>First Citizens Bank</i>
Eduardo Sobrino, CLFP	<i>Commercial Equipment Finance, Inc.</i>	Carol Williams Maurer, CLFP	<i>The Huntington National Bank</i>
Michelle Speranza, CLFP	<i>LEAF Commercial Capital Inc.</i>	Heather Wohaska, CLFP	<i>First American Equipment Finance, a City National Bank Company</i>
Lisa Stadler, CLFP	<i>Entegra Capital LLC</i>	David Wynn, CLFP	<i>Ascentium Capital LLC</i>
Denise Steinberger, CLFP	<i>North Mill Equipment Finance</i>	Whitnee Yager, CLFP	<i>Amur Equipment Finance</i>
Timothy Stickney, CLFP	<i>Key Equipment Finance</i>	Denise Zeise, CLFP	<i>Key Equipment Finance</i>
Steven Strozewski, CLFP	<i>U.S. Bank Equipment Finance</i>	Anna Ziegler, CLFP	<i>First American Equipment Finance, a City National Bank Associate Company</i>
Amy Sumerfelt, CLFP	<i>U.S. Bank Equipment Finance</i>		
Paula Summers Murphy, CLFP	<i>Vision Financial Group, Inc.</i>		
Matthias Swanson, CLFP	<i>The Huntington National Bank</i>		
Kara Szymanski, CLFP	<i>DLL</i>		
Edgar Teniente, CLFP	<i>Orion First Financial LLC</i>		
Kristen Thompson, CLFP	<i>The Huntington National Bank</i>		
Motofumi Tohda, CLFP	<i>Tokyo Century (USA) Inc.</i>		
Maria Trettel, CLFP	<i>Oakmont Capital Holdings, LLC</i>		
Jeffrey Truitt, CLFP	<i>DLL</i>		
Samantha Trznadel, CLFP	<i>ECS Financial Services, Inc. Associate</i>		
Joseph Tuholsky, CLFP	<i>Northland Capital Financial Services, LLC</i>		
Catharyn (Emily) Tyrwhitt, CLFP	<i>ECS Financial Services, Inc.</i>		
Joshua Utke, CLFP	<i>Sun Key Equipment Finance</i>		
Dannika Valdez, CLFP	<i>AP Equipment Financing</i>		
Stacie VanBibber, CLFP	<i>Amur Equipment Finance</i>		
Marc Venere, CLFP	<i>DLL</i>		

## CINDY SPURDLE AWARD OF EXCELLENCE & CLFP DAY



On August 25th, the CLFP membership gathered online for the annual virtual call to review the achievements for the year and also to award the annual Cindy Spurdle Award of Excellence.

The Cindy Spurdle Award was created in 2012 to acknowledge the CLFP who has contributed the most to the industry and best represents the CLFP ideals for the year. Nominees are submitted by the CLFP membership, and the final award candidate is voted upon by the entire CLFP Board of Directors.

This year's winner was Candace Reinhart, CLFP – SVP Operations and Syndications at CoreTech Leasing. She stated, "I cannot express my gratitude enough to the Foundation,

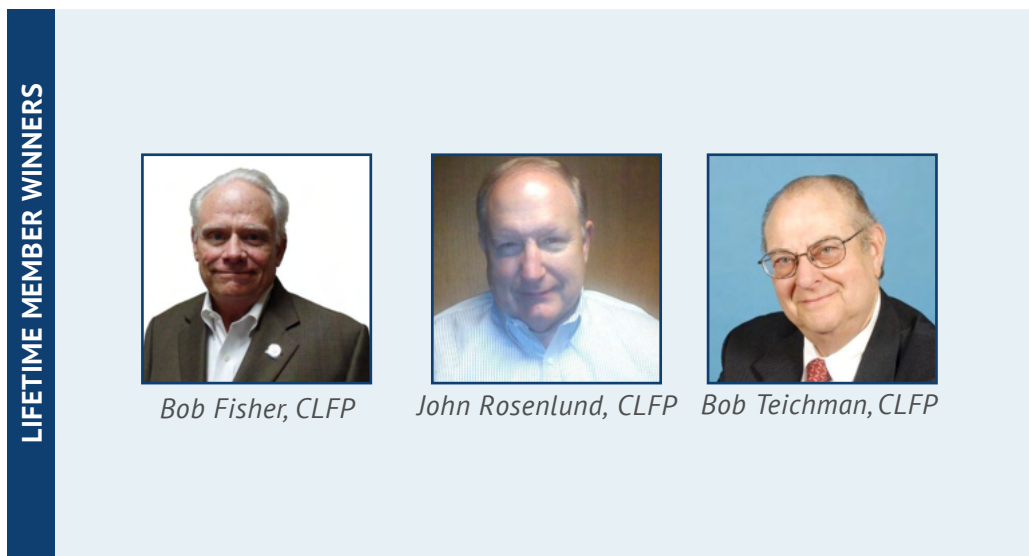
the board of directors, and in particular, Reid Raykovich and Deb Reuben – two women who have been an inspiration to me with their passion for positive impact on an industry we all love. To those considering the path to this esteemed designation, I encourage you to take the leap. The principles of the CLFP Foundation, coupled with this quickly growing member group, provide an encouraging look into what positive work we can do together. CLFP brings unparalleled knowledge, ongoing education, and a mission for exceptional standards and expertise."

The celebration also included a new award – the Lifetime Member Award. The award was created to honor

those who contributed significantly to the Foundation over the years and remained involved throughout retirement. Nominees were submitted by Foundation Board members and then voted on by the entire Board.

The three individuals were honored: Bob Fisher, John Rosenlund, and Bob Teichman.

Other in-person celebrations were held throughout the United States including the following cities: Seattle, WA; Portland, OR; Walnut Creek, CA; Denver, CO; Minneapolis, MN; Philadelphia, PA; Albany, MN; Tustin, CA; Fort Smith, AR; Charleston, SC; Portage, MI; Rochester, NY.





# CLFP DAY CELEBRATION PHOTOS





## ALFP 2022 RECAP

The CLFP Foundation continued to offer the Academy for Lease & Finance Professionals (ALFP) and held 20 throughout the year, compared to 14 in 2021.

This year, the in-person ALFPs returned and special thanks go to those who took time out of their busy schedules to travel and teach (marked with an asterisk).

Without the volunteers below, this could not have been possible. Just look at how many ALFPs some of them taught (number after their name)!

- Andy Belliveau, CLFP (6)
- John Bradford, CLFP (6)
- Donnie Bunn, CLFP (11)\*
- Eric Bunnell, CLFP (2)
- Todd Buzard, CLFP (10)\*
- Megan Bystol-Olvera, CLFP (2)
- Kevin Canepa, CLFP (1)
- Mike Cohen, CLFP (7)\*
- Diana Crews, CLFP (1)
- Jack Elenbaas, CLFP (2)
- Ann Erikson, CLFP (2)
- Leonard Lane, CLFP (1)
- Jill Molitor, CLFP (4)
- Kathy Nordendahl, CLFP (5)
- Matt Padden, CLFP (6)
- Kevin Prykull, CLFP (9)\*
- Greg Pabich, CLFP (8)
- Reid Raykovich, CLFP (1)
- Candace Reinhart, CLFP (8)\*
- Cal Shoemake, CLFP (1)
- Paula Summers-Murphy, CLFP (2)
- Mark Thomas, CLFP (3)
- Mel Vinson, CLFP (15)
- Lia Wax, CLFP (9)\*
- Lisa Whitehead, CLFP (1)
- Chris(tine) Williams, CLFP (3)

A special thank you to our hosts!  
Both DLL and Huntington hosted 2 ALFPs!





TO OUR PARTNERS!

**If you can predict it,  
you can improve it.**

Unlock financial intelligence with Tamarack AI.



Naturally intelligent financial data

888 952 8268  
Discover@TamarackNow.com

TamarackNow.com

**At Financial Pacific Leasing, we DO take it personally.  
Our customer service, that is.**

Your financing partner  
for equipment leasing,  
nationwide



Financial Pacific Leasing  
Pleased to be a platinum sponsor  
for the CLFP Foundation

800.447.7107 | www.finpac.com

**JOB SEARCHING CLFP?  
DON'T FORGET TO CHECK ORION FIRST!**

At its core, Orion is a manager of risk - so  
if you're looking to make a low-risk,  
high-reward career decision visit  
[orionfirst.com/careers](http://orionfirst.com/careers) for  
current job openings.



SERVING THOSE WHO  
FUND SMALL BUSINESS

**YOUR LEASE  
PORTFOLIO,  
EXPERTLY  
MANAGED**

**Services to Help Your Business**

- Lease Portfolio Management
- Income Tax and Accounting Services
- Advisory Services
- Sales/Use Tax Consulting, Compliance, and Registration
- Personal Property Tax Compliance
- 10 CLFPs on Staff


**800.826.7070**  
Nancy Geary, CPA, CLFP  
Shari Lipski, CLFP  
Visit: [ecsfinancial.com/clfp](http://ecsfinancial.com/clfp)



**Less work,  
more flow**

Automate your asset finance business  
processes end to end - you control how you  
work on the Odessa Platform.

Learn more



**ascantium  
CAPITAL**

Seize more business opportunities.  
**Let's work together!**

**Learn more online:**  
[Ascantium.Info/CLFP22](http://Ascantium.Info/CLFP22)

Financing subject to credit parameters. Loans made or arranged pursuant to a California Financing Law license.



## 2023 CLFP BOARD OF DIRECTORS



Jenny Wood, CLFP  
*Orion First Financial, LLC*



Lia Wax, CLFP  
*Financial Pacific Leasing*



Todd Buzard, CPA, CLFP  
*First American Equipment Finance*



Mike McDonald, CLFP  
*Stryker*



Candace Reinhart, CLFP  
*CoreTech Leasing*



Craig Colling, CLFP  
*Ascentium Capital LLC*



Nick Gibbens, CLFP  
*Wintrust Specialty Finance*



Ben Hall, CLFP  
*U.S. Bank Equipment Finance*



Brent Hall, CLFP  
*Alliance Funding Group*



Mikki Henkelman, CLFP  
*Oakmont Capital Holdings*



Theresa Kabot, CLFP  
*Kabot Commercial Leasing*



Paul Knowlton, CLFP  
*Huntington National Bank*

# 2023 CLFP BOARD OF DIRECTORS



Larry LaChance, CLFP  
*Bankers Capital*



Eric Mandella, CLFP  
*Navitas Credit Corp.*



Jill Molitor, CLFP  
*Stearns Bank*



Michael "Mic" Mount, CLFP  
*U.S. Bank Equipment Finance*



Kathy Nordendahl, CLFP  
*Dedicated Funding, LLC*



Deborah "Deb" Reuben, CLFP  
*TomorrowZone*



Molly Simon, CLFP  
*DLL*



Dave Verkinderen, CLFP  
*U.S. Bank Equipment Finance*

## COMPANIES WITH 3 OR MORE CLFPS

2021 Rank	2022 Rank	Company	2022 Count	2020 Count	Change
1	1	First American Equipment Finance, a City National Bank Company	139	144	-3%
2	3	U.S. Bank Equipment Finance	54	53	2%
6	3	DLL	52	28	86%
3	4	Ascentium Capital LLC	45	47	-4%
4	4	Key Equipment Finance	45	37	22%
10	6	The Huntington National Bank	35	21	67%
8	7	Amur Equipment Finance	34	25	36%
9	8	Oakmont Capital Holdings	30	23	30%
12	9	Financial Pacific Leasing, Inc., an Umpqua Bank Company	29	29	0%
10	11	AP Equipment Financing	24	21	14%
7	12	Stearns Bank NA-Equipment Finance Division	21	26	-19%
26	13	North Mill Equipment Finance	19	9	111%
14	14	Channel	18	14	n/a
20	15	Stryker	17	11	55%
13	16	KLC Financial, Inc.	16	16	0%
16	17	ECS Financial Services, Inc.	15	12	25%
14	17	Orion First Financial LLC	15	14	7%
16	19	Odessa	14	12	17%
31	20	Northland Capital Financial Services, LLC	13	7	86%
16	21	Ivory Consulting Corporation	12	12	0%
20	21	Navitas Credit Corp.	12	11	9%
16	23	1st Source Bank	11	12	-8%
31	23	Beacon Funding Corporation	11	7	57%
n/a	23	CIT a division of First Citizens Bank & First Citizens Bank*	11	1	1000%
24	23	Fleet Advantage, LLC	11	10	10%
20	27	Wintrust	10	11	-9%
31	28	Cadence Bank	9	7	29%
24	28	Canon Financial Services, Inc.	9	10	-10%
26	28	Solifi	9	9	0%

2021 Rank	2022 Rank	Company	2022 Count	2020 Count	Change
31	33	Alliance Funding Group	8	7	14%
31	33	BMO Harris Equipment Finance Company	8	7	14%
29	33	LTi Technology Solutions	8	8	0%
42	33	Quality Leasing Co., Inc.	8	4	100%
n/a	37	Commercial Equipment Finance, Inc.*	7	1	600%
36	37	GreatAmerica Financial Services	7	6	17%
29	37	Truist	7	8	-13%
n/a	40	Crossroads Equipment Lease & Finance LLC*	6	1	500%
38	41	CoreTech Leasing, Inc.	5	5	0%
49	41	Nexseer	5	3	67%
n/a	41	Tokyo Century (USA) Inc.*	5	0	n/a
38	41	Univest Capital, Inc.	5	5	0%
42	45	Cisco Systems Capital Corporation	4	4	0%
n/a	45	Falcon Equipment Finance, a division of Falcon National Bank*	4	1	300%
49	45	First Commonwealth Equipment Finance	4	3	33%
38	45	First Foundation Bank	4	5	-20%
49	45	FIS	4	3	33%
42	45	Hanmi Bank	4	4	0%
42	45	UniFi Equipment Finance, Inc.	4	4	0%
n/a	45	Vision Financial Group, Inc.*	4	1	300%
n/a	53	APEX Commercial Capital Corp.*	3	2	50%
38	53	BankFinancial, NA	3	5	-40%
42	53	Commerce Bank	3	4	-25%
49	53	Commercial Capital Company, LLC	3	3	0%
n/a	53	Dext Capital*	3	0	n/a
49	53	ENGS Commercial Finance Co.	3	3	0%
n/a	53	LEAF Commercial Capital Inc.*	3	0	n/a
n/a	53	MAZO Capital Solutions*	3	1	200%
49	53	NCMIC Finance Corporation	3	3	0%
49	53	NorthTek, Inc.	3	3	0%
n/a	53	PEAC Solutions*	3	1	200%
n/a	53	Sumitomo Mitsui Finance and Leasing Co., Ltd.*	3	2	50%
n/a	53	Tamarack Technology*	3	2	50%
49	53	Taycor Financial	3	3	0%
n/a	53	TD Equipment Finance, Inc.*	3	1	200%
n/a	53	Thermo Fisher Financial Services*	3	1	200%
n/a	53	Transport Enterprise Leasing*	3	0	n/a

\*Denotes new to the list

Celtic Commercial, Bank of the West, First National Capital Corporation, and Global Financial & Leasing Services LLC dropped off

# NEW CLFPS AND ASSOCIATES



Eric Angleró CLFP



Michael Arida, CLFP



Katherine Baker,  
CLFP



Karla Beran, CLFP



Alec Bercher, CLFP



Christopher Bough,  
CLFP



Kyle Boysen, CLFP



Stacey Brewster,  
CLFP



Zachary Burghardt,  
CLFP



John Burrell, CLFP



Justin Collum, CLFP



Daniel Constants,  
CLFP Assoc.



Sheila Coyle, CLFP



Whitley Delaney,  
CLFP



Nicholas Demers,  
CLFP



Logan Dickey, CLFP



Tonya DiGregorio,  
CLFP



Steven Easter, CLFP



Heather Ellison,  
CLFP



Wade Fox, CLFP



# NEW CLFPS AND ASSOCIATES



Christopher Frans,  
CLFP



Joel Freebersyser,  
CLFP



Wilmely Garcia  
Ramos, CLFP



David Gernhard,  
CLFP



Jared Goldberg,  
CLFP



Richard Griffin Jr.,  
CLFP



Mitchell Hartmann,  
CLFP



Zachary Heyd, CLFP



Jodi Hoskins, CLFP



Maganlall  
Jugurnauth, CLFP



Lori Kline, CLFP



Emily Krause, CLFP



Raysa Leguizamon,  
CLFP Assoc.



Alexander Lindsey,  
CLFP



Christopher Little,  
CLFP



David Lowe, CLFP



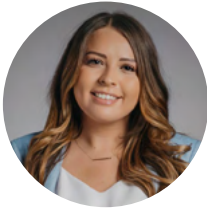
Mariana Melo  
Mejia, CLFP



Jessica Meyer, CLFP



Benjamin Mussehl,  
CLFP



Claire Nelson, CLFP

## NEW CLFPS AND ASSOCIATES

---



Rebecca Persin,  
CLFP



Trevor Petersen,  
CLFP



Thomas Rahlfs,  
CLFP



Megan Reigstad,  
CLFP



Catherine Robinson  
(Galloway), CLFP



Christopher Rooney,  
CLFP



Rachel Rouillard,  
CLFP



Melanie Rudiger,  
CLFP



Shelby Schut, CLFP



Rema Shamon,  
CLFP



Zachary Shiffman,  
CLFP



Darren Sholes,  
CLFP



Ricardo Small, CLFP



Michelle Speranza,  
CLFP



Samantha Trznadel,  
CLFP Assoc.



Catharyn (Emily)  
Tyrwhitt, CLFP



Stacie VanBibber,  
CLFP



Sarah Walter, CLFP



Benjamin Wendt,  
CLFP



Nicole White, CLFP



Carol Williams  
Maurer, CLFP



Whitnee Yager,  
CLFP

# Thank you

TO OUR PARTNERS!



**Proud to support the CLFP Foundation**  
Employing the most CLFPs in the industry



**BUILDING RELATIONSHIPS.  
SUPPORTING YOUR GROWTH.**

**WINTRUST**  
SPECIALTY FINANCE  
[wintrust.com/wsf](http://wintrust.com/wsf)

Wintrust Specialty Finance is a division of Beverly Bank & Trust Company, N.A., a Wintrust Community Bank. Banking products provided by Wintrust Financial Corp. banks.



**aurora**  
vendor/broker portal  
quote to signed docs in 3 mins



50% of monitor vendor channel use

**northteq**



**Partners in Equipment Financing & Leasing for over 20 years!**

Just entered into my 8 or 9th contract with AP! In short, great team, from Sales, to Finance, to customer service!

★★★★★ - Google Reviews

CALL US AT  
**1-800-604-4817**

[www.apfinancing.com](http://www.apfinancing.com)



We are proud supporters of the CLFP Foundation

## THANK YOU TO OUR 2022 CORPORATE PARTNERS

### PLATINUM \$2500

AP Equipment Financing  
Ascentium Capital  
ECS Financial Services  
Financial Pacific Leasing  
First American Equipment Finance  
Great American Insurance Group  
LTi Technology Solutions  
Northteq  
Odessa  
Orion First Financial  
Tamarack Technology, Inc.  
Wintrust Specialty Finance

### SILVER \$1150

Amur Equipment Finance  
Arvest Equipment Finance  
BMO Harris Equipment Finance  
Oakmont Holdings

### BRONZE \$500

AACFB  
Ivory Consulting Corporation  
Pawnee Leasing Corporation  
TomorrowZone

## THANK YOU TO OUR 2022 PERSONAL PARTNERS

### BENEFACTOR \$250+

Robert Boyer, CLFP  
Donnie Bunn, CLFP  
Tina Cartwright, CLFP  
Andrew Clark, CLFP  
Craig Colling, CLFP  
Mike Coon, CLFP  
Jeff Elliott, CLFP  
Chris Enbom, CLFP  
Paul Fogle, CLFP  
Lisa Genereux, CLFP  
Nate Gibbons, CLFP  
Ben Hall, CLFP  
Robert Harris, CLFP  
Jaime Kaneshina, CLFP  
Marc Keepman, CLFP  
Joe Leonard, CLFP  
Shari Lipski, CLFP  
Toby McDonough, CLFP  
Mic Mount, CLFP  
Daniel Nelson, CLFP  
David Normandin, CLFP  
Drew Olynick, CLFP  
Kevin Prykull, CLFP  
Reid Raykovich, CLFP  
Candace Reinhart, CLFP  
Bob Rinaldi, CLFP  
Pete Sawyer, CLFP  
Dave Schaefer, CLFP  
Dave Verkinderen, CLFP  
Don Wampler, III, CLFP  
**SPONSOR \$100 – \$249**  
Shannah Berger, CLFP  
Patty Boehl, CLFP  
Eric Bunnell, CLFP  
Dean Ceglia, CLFP

Donna Christensen, CLFP  
Anita Colvin, CLFP  
Quentin Cote, CLFP  
Tracey Elfering, CLFP  
Suzann Fakhoury, CLFP  
Adam Fay, CLFP  
Nick Fong, CLFP  
Joe Franco, CLFP  
John Freeman, CLFP  
Nick Gibbens, CLFP  
Marc Gingold, CLFP  
Brent Hall, CLFP  
Steve Hanneman, CLFP  
Katharine Harris, CLFP  
Mikki Henkelman, CLFP  
Theresa Kabot, CLFP  
Tammy Kady, CLFP  
Paul Knowlton, CLFP  
Vince Knowlton, CLFP  
Celenia Kurtz, CLFP  
Chris Lerma, CLFP  
Al Lopez, CLFP  
Zack Marsh, CLFP  
Dave Maslyk, CLFP  
Mark McKissick, CLFP  
Kathy Nordendahl, CLFP  
Katie O'Mara, CLFP  
Greg Pabich, CLFP  
John Pfister, CLFP  
Mae Philpott, CLFP  
Shervin Rashti, CLFP  
Greg Rieke, CLFP  
Colin Rosenmeyer, CLFP  
Brenton Russell, CLFP  
Larry Scherzer, CLFP  
Andrea Schmid, CLFP

Tony Sedlacek, CLFP  
Guy Selinka, CLFP  
Alan Sikora, CLFP  
Kalah Sprabeary, CLFP  
Anthony Stein, CLFP  
Natalie Tawil, CLFP  
Jeff Teucke, CLFP  
Carl Villella, CLFP  
Janeen Waddell, CLFP  
Annette Watkins-Harris, CLFP  
Lisa Whitehead, CLFP  
Christine Williams, CLFP  
Bruce Winter, CLFP  
Jenny Wood, CLFP  
**SUPPORTER \$50 – \$99**  
Randy Anderson, CLFP  
Criss Brown, CLFP  
Sonia Cliffel, CLFP  
Martin Cowie, CLFP  
David Cramer, CLFP  
Paul Crnkovic, CLFP  
Doug Czajkowski, CLFP  
Tina Eickhoff, CLFP  
Ron Elwood, CLFP  
Steve Geller, CLFP  
David Holmgren, CLFP  
Melissa Kaul, CLFP  
Larry LaChance, CLFP  
Andrew Mallinger, CLFP  
Chris Maudlin, CLFP  
Mike McElroy, CLFP  
Andrew Mellon, CLFP  
Josh Metcalf, CLFP  
Randy Montrose, CLFP  
Donna O'Brien, CLFP  
Shannon Prange, CLFP

Carrie Radloff, CLFP  
John Rosenlund, CLFP  
Russ Runnalls, CLFP  
Janice Schawillie, CLFP  
Kristi Serrano, CLFP  
Molly Simon, CLFP  
Bob Smith, CLFP  
Will Thomsen, CLFP  
Ryan van de Boogaard, CLFP  
Kevin Vick, CLFP  
Justin Wilmes, CLFP  
Terry Wood, CLFP  
Armando Yopez, CLFP  
Tony Ziegler, CLFP  
Joey Zrinzo, CLFP  
**CONTRIBUTOR \$25 – \$49**  
Russ Bass, CLFP  
Dan Callahan, CLFP  
Jose Cortez, CLFP  
Dan Dudley, CLFP  
Erin Foster, CLFP  
Edward Gerek, CLFP  
Amy Hall, CLFP  
John Harders, CLFP  
Scott Jankowski, CLFP  
Martin Klotzman, CLFP  
Kerilyn Marlink, CLFP  
Evan Moreau, CLFP  
Emily Purvis, CLFP  
Tracy Schneider, CLFP  
John Snyder, CLFP  
Lauren Timlin, CLFP  
Natalie Udvar, CLFP  
Bobbie Warner, CLFP  
Morka Wolde, CLFP